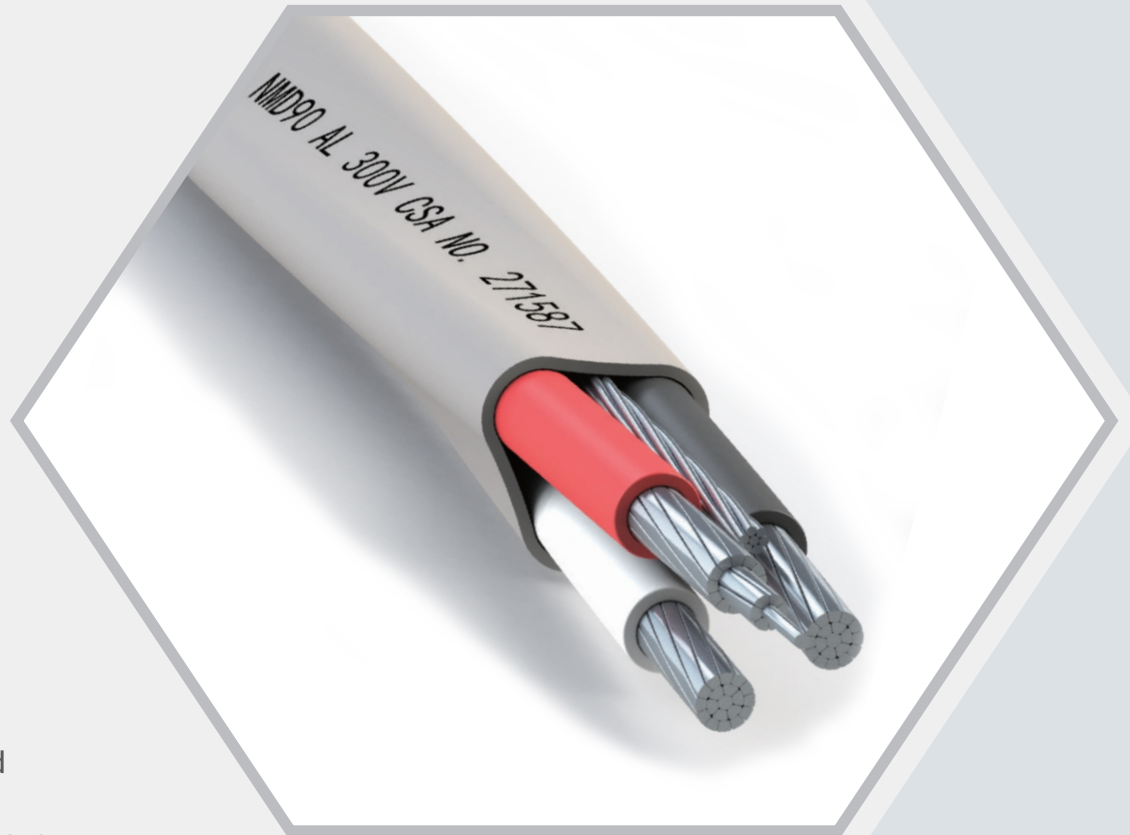


NMD90 ALUMINUM

Non-metallic Sheathed Cable, 300V;
T90 Nylon or RW90 Insulation, PVC Jacket, Aluminum, Building Wire

Aluminum Conductors
300V / -40°C MIN
90°C MAX
XLPE Insulation
PVC Jacket



STRUCTURE:

- 1. Conductor :** Aluminum Alloy
8000 series ACM with AL
grounding wire
- 2. Insulation :** PVC insulation and
nylon covering or Cross-linked
Polyethylene (XLPE)
- 3. Insulation color :** Black, red and white
for 3 conductor
- 4. Jacket :** PVC, Heat and moisture-resistant, flame retardant FT1

Standard: CSA C22.2 No. 48 (non-metallic sheathed cable)

cUL File No.: E487898 **CSA file No.:** 271587 **Voltage :** 300V

Working temperature: -40°C/ -25°C MIN, 90°C MAX

Performance: FT-1 Flame retardant; Heat and moisture-resistant

TECHNICAL DATA:

Conductor					Grounding Wire		Jacket Thickness	Cable Dimensions	Weight	Max. DC resistance at 20C (Ω/km)
Size AWG	NO.	No. of strands	Insulation Thickness	Nylon Thickness	Size (AWG)	No. of Strands				
			mm	mm			mm	mm	kg/km	
8	3	7	0.89	0.16	10	1	1.14	14.8	231.8	3.52
6	3	7	1.14	0.20	8	7	1.14	18.1	337.6	2.21
4	3	7	1.14	0.20	8	7	1.52	21.4	475.6	1.39
2	3	7	1.14	0.20	6	7	2.03	25.8	701.2	0.875

RW90/RWU90 WIRE

Thermoset-Insulated Wire, 600V;
XLPE Insulation, Single Conductor, Copper or Aluminum

Aluminum Conductors
300V / -40°C MIN
90°C MAX
XLPE Insulation
PVC Jacket



STRUCTURE:

- 1. Conductor:** Annealed bare copper wires or compact aluminum 8000 series wires
- 2. Insulation:** Cross-Linked Polyethylene (XLPE)

Standard: CSA Standard C22.2 No.38 (Thermoset-Insulated Wires and Cables)

cUL File No.: E466693 **CSA file No.:** 271587

Voltage: 600V 1000V or 2000V For RW90. 1000V For RWU90

Working temperature: -40°C MIN, 90°C MAX

Performance: Sun Res(SR), Cold(-40C)

Marking on the surface of cable: HT CABLES CSA 271587 ***AWG TYPE RW90 or RWU90 XLPE 90C FT4 SR 600V (-40°C) YEAR ****m

TECHNICAL DATA:

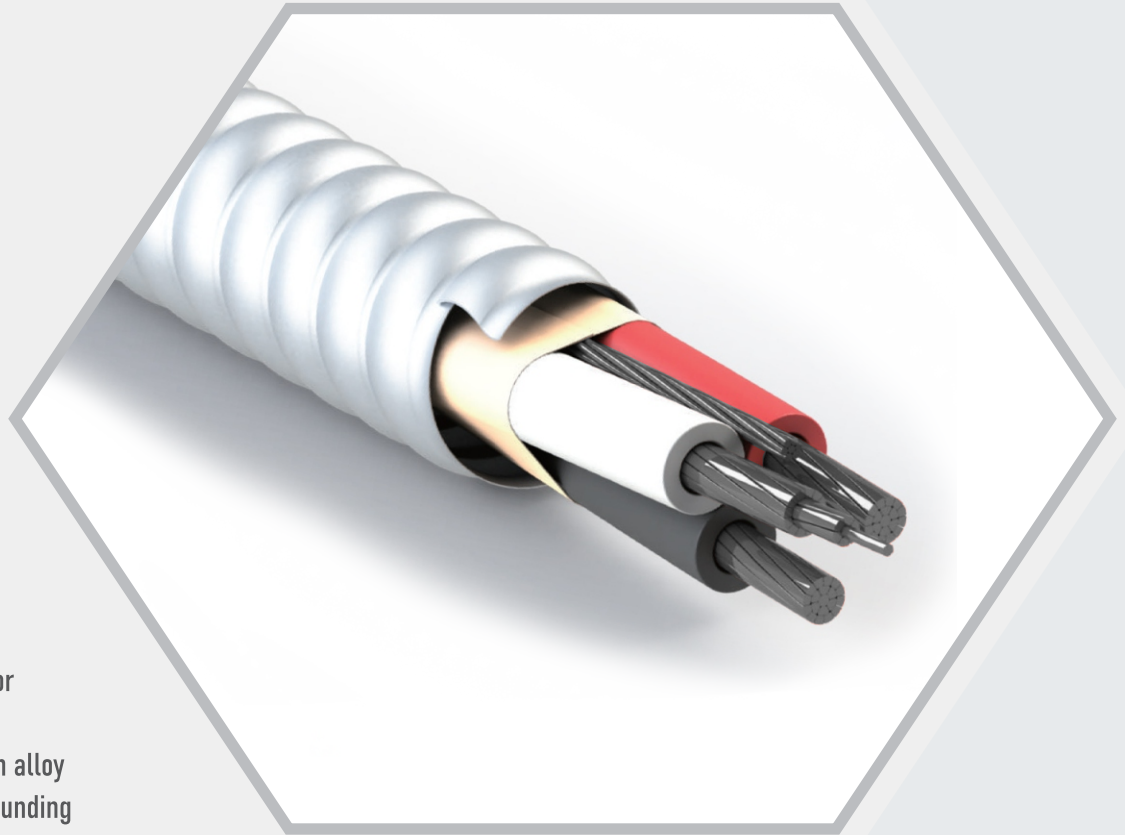
RW90 600V

Conductor			Insulation thickness	Approx. OD (mm)
AWG/KCMIL	Nos of strands(CU)	Nos of strands(AL)	(mm)	CU
1/0	19	19	1.4	11.9
250	37	37	1.65	17.2
500	37	37	1.65	23.1

AC90

Metal Clad Armored Cable, 600V;
RW90 Insulation, Armored, Multi-conductor, Copper or Aluminum

Aluminum Conductors
300V / -40°C MIN
90°C MAX
XLPE Insulation
PVC Jacket



STRUCTURE:

- 1. Conductor :** Copper conductor with Copper grounding wire
14AWG to 2AWG or aluminium alloy
8000 series ACM with AL grounding wire 6AWG to 750MCM
- 2. Insulation:** Cross-linked polyethylene insulation (RW90 XLPE)
- 3. Assemble wrap:** Conductor assembly paper wrapped
- 4. Armored:** Interlocked aluminum armour
- 5. Number of conductor:** Two, three or four core round laid

Standard: CSA C22.2 No. 51 - Armoured Cables

cUL File No.: E466697 CSA file No.: 271587 Voltage : 600V

Working temperature: in dry locations only at temperature not to exceed 90°C.

Performance: FT4 Flame retardant; Lead free and ROHS compliant.

TECHNICAL DATA:

Aluminium conductor with sizes series in 3, 4 core, other sizes also available

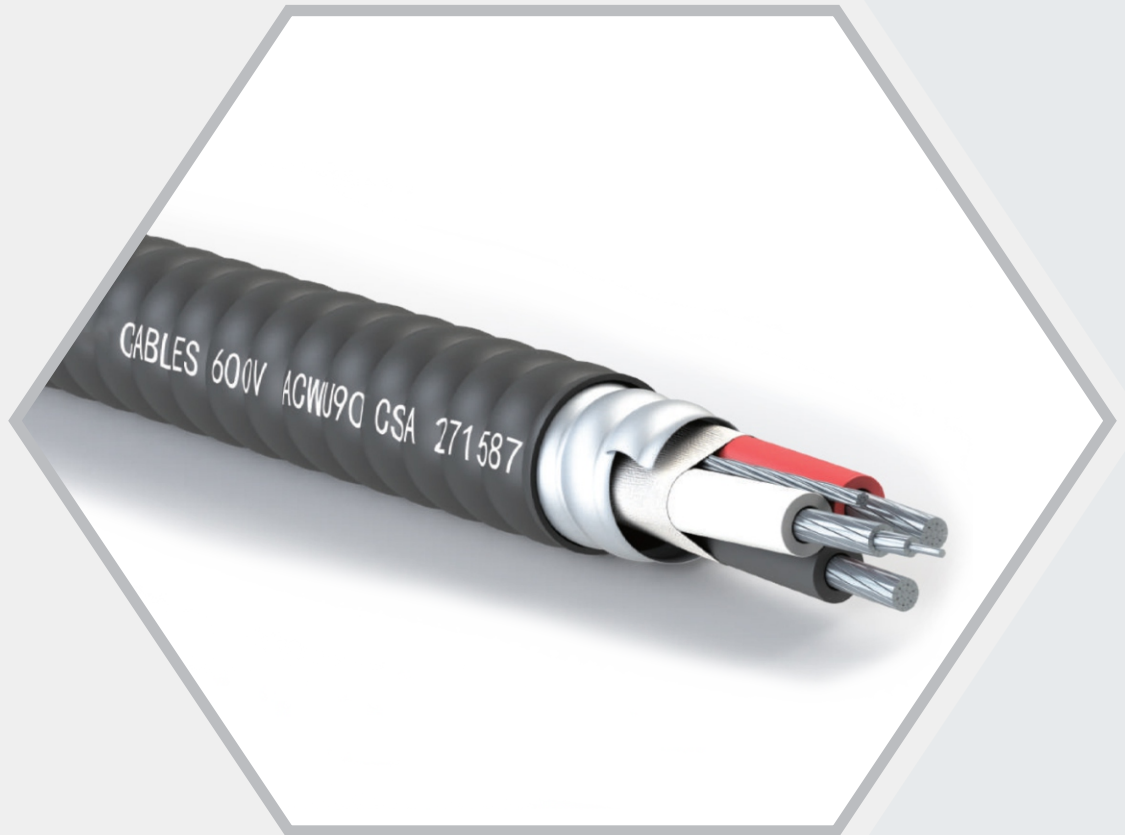
Size	Conductor			Grounding Wire		OD	Weight	Max. DC Resistance of phase conductor at 20C
	No.	Nos. of strands	Insulation Thickness	Size	No. of Strands			
Awg/kcmil			mm	awg		mm	Kg/km	Ω /km
1	3	19	1.40	4	7	30.5	695.1	0.639

All dimensions are nominal and subject to normal manufacturing tolerances

ACWU90

Metal Clad Armored Cable, 600V or 1000V;
RW90 Insulation, Armored, PVC Jacket, Multi-conductor, Aluminum

Aluminum Conductors
300V / -40°C MIN
90°C MAX
XLPE Insulation
PVC Jacket



STRUCTURE:

- 1.Conductor** : Three or four compact 8000 Series ACM aluminum conductors with bare aluminum bonding wire in multi-conductor cables
- 2.Insulation** : Cross-linked polyethylene insulation (XLPE)
- 3.Assemble wrap** : Conductor assembly paper or PP tape wrapped
- 4.Armored** : Interlocked aluminum armor
- 5.Overall Jacket** : PVC jacket
- 6.Conductor color** : Black, red and white for 3 conductor,
Black, red, blue and white for 4 conductor

Standard: CSA Standard CSA C22.2 No. 51-20 (Metal-clad Cable)

cUL File No.: E466697 CSA file No.: 271587 Voltage : 600V

Working temperature: -40°C/ -25°C MIN, 90°C MAX

Performance: FT4 Flame retardant; Sunlight Resistant

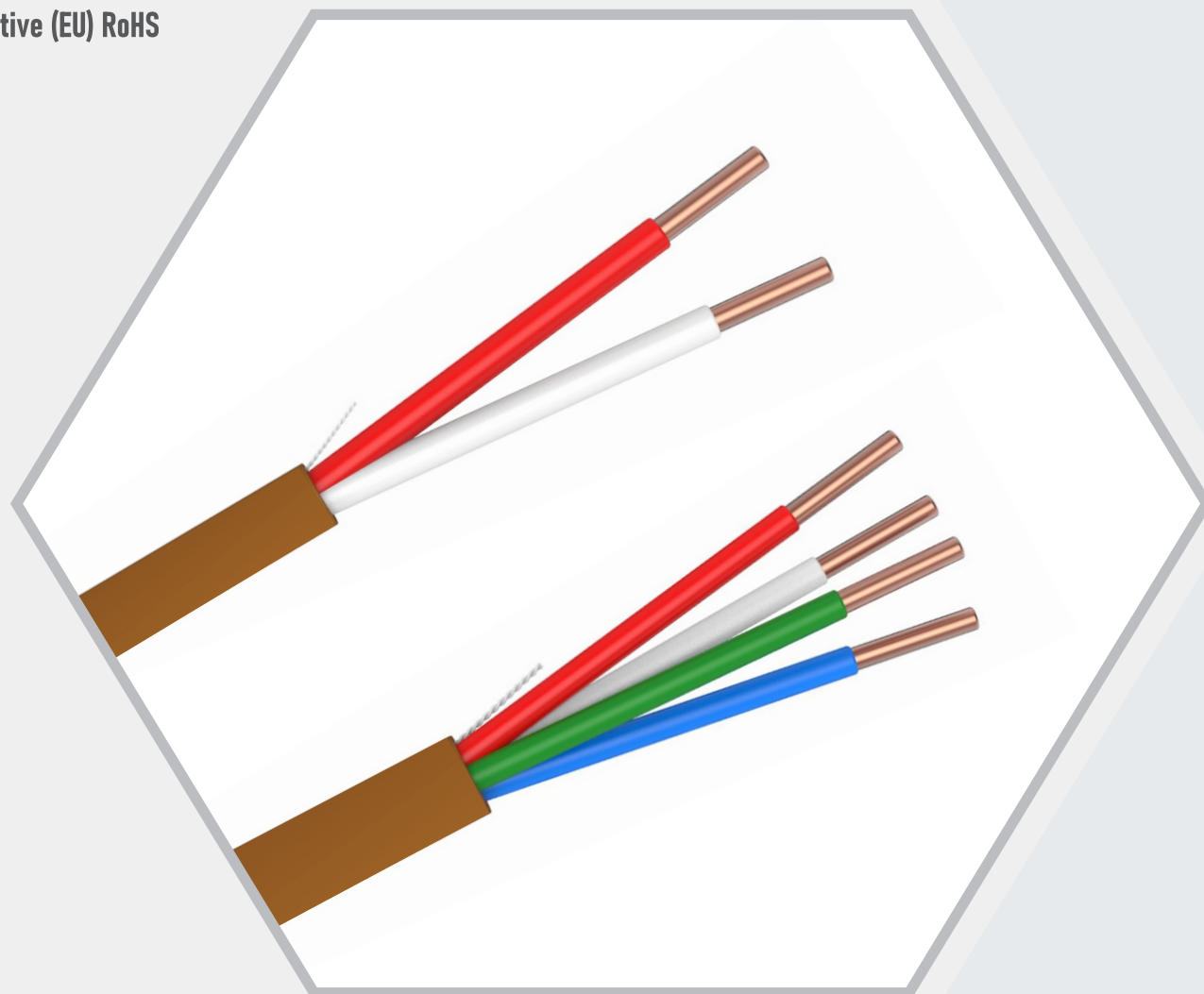
Technical data: AL Conductor with bare AL aluminum tape interlocked armoured size series in 3 and 4 core

No of phase	Size	Insulation thickness	Bonding wire Size	PVC Jacket	Approximate Total Diameter	Approximate Net Cable Weight
	AWG or Kcmil	mm	AWG	mm	mm	kg/km
3	6	1.14	8	1.27	21.6	807.4
3	2	1.14	6	1.27	27	1,188.4
3	1	1.40	4	1.27	29.9	1,411.6
3	1/0	1.40	4	1.27	31.8	1,575.2
3	2/0	1.40	4	1.27	34	1,772.8
3	3/0	1.40	4	1.27	36.6	2,015.2
3	4/0	1.40	4	1.27	39.5	2,304.1
3	250	1.65	2	1.52	43.5	2,668.4
4	3	1.14	6	1.27	28	1,256.4
4	250	1.65	2	1.52	51.2	3,708.4
4	350	1.65	2	1.52	57.1	4,534.4
4	500	1.65	1	1.90	65.2	5,733.4

18AWG LVT CABLE 2C 4C

60°C, 150V, CMG/CL2R RATED

UL 13
CSA TYPE LVT
Directive (EU) RoHS



STRUCTURE:

1. **Conductors:** 18 AWG Solid Bare Copper
2. **Insulation:** PVC
 - 2C: White & Red
 - 4C: Red, White, Blue, Green
3. **Assembly:** Cabled; Unshielded; & Jacketed
4. **Jacket:** PVC, Color : Brown or as Request

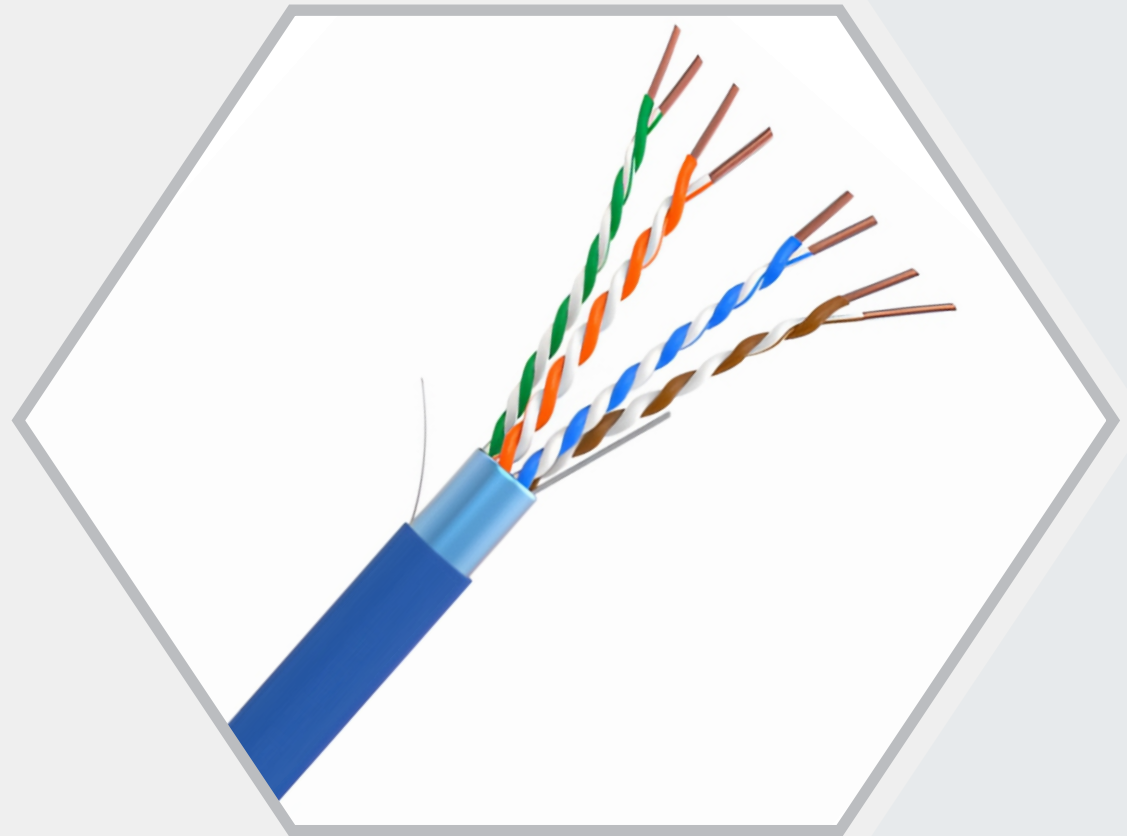
Electrical & Physical Characteristics:

Operational Temperature	-20°C~+70°C
Conductor DCR 20°C	≤21.4Ω/KM
Operating Voltage, maximum	150 V

23 AWG 4 PAIR CAT 6

60°C, 250MHz CM RATED; 4 UNSHIELDED TWISTED PAIRS

- Meets TIA/EIA 568-B.2
- UL 444 CM
- CSA FT4
- Directive (EU) RoHS



STRUCTURE:

1. Conductors :

23 AWG Solid Bare Copper

2. Insulation : HDPE

Blue & White / Blue Stripe;
Orange & White/Orange Stripe;
Green & White Green Stripe;
Brown & White / Brown Stripe

3. Assembly : 4 Pairs Individually Twisted, Cabled; PE Cross, Unshielded; & Jacketed

4. Jacket: PVC, Color : Blue or as request

Electrical & Physical Characteristics:

Operational Temperature	-20°C ~ +70°C
Nominal Velocity of Propagation (NVP)	65%
Characteristic Impedance(Ohm)	100±15
Operating Voltage, maximum	80 V

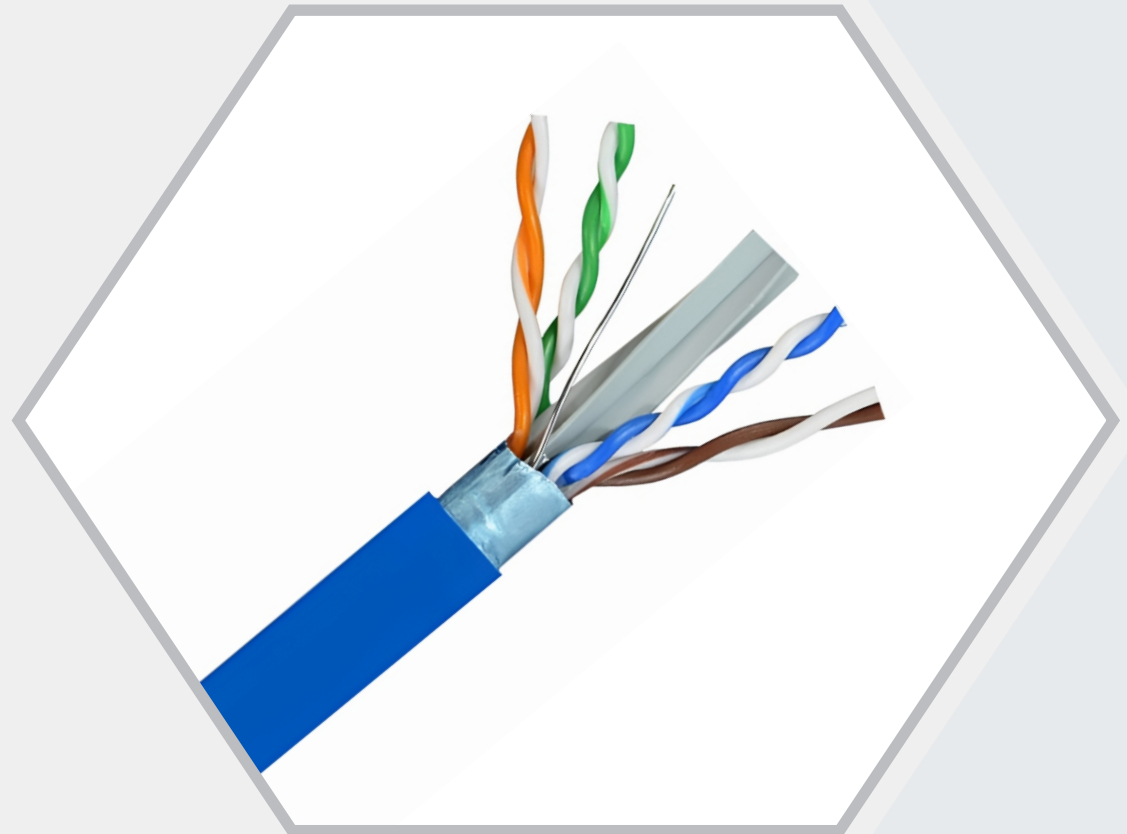
Fluke tested

Frequency (MHz)	Attenuation (dB)	NEXT (dB)	PSNEXT (dB)	ACRF (dB)	PSACRF (dB)	Return loss (dB)	Delay (ns)
1.00	2.1	65.0	62.0	63.3	60.3	19.0	580
4.00	4.0	63.0	60.5	51.2	48.2	19.0	562
8.00	5.7	58.2	55.6	45.2	42.2	19.0	557
10.00	6.3	56.6	54.0	43.3	40.3	19.0	555
16.00	8.0	53.2	50.6	39.2	36.2	18.0	553
20.00	9.0	51.6	49.0	37.2	34.2	17.5	552
25.00	10.1	50.0	47.3	35.3	32.3	17.0	551
31.25	11.4	48.4	45.7	33.4	30.4	16.5	550
62.50	16.5	43.4	40.6	27.3	24.3	14.0	549
100.00	21.3	39.9	37.1	23.3	20.3	12.0	548
200.00	31.5	34.8	31.9	17.2	14.2	9.0	547
250.00	35.9	33.1	30.2	15.3	12.3	8.0	546

24 AWG 4 PAIR CAT 5E

60°C, 100MHz CM RATED; 4 UNSHIELDED TWISTED PAIRS

- Meets TIA/EIA 568-B.2
- UL 444 CM
- CSA FT4
- Directive (EU)



STRUCTURE:

1. Conductors :

24 AWG Solid Bare Copper

2. Insulation : HDPE

Blue & White / Blue Stripe;
Orange & White/Orange Stripe;
Green & White Green Stripe;
Brown & White / BrownStripe

3. Assembly : 4 Pairs Individually Twisted, Cabled; PE Cross, Unshielded; & Jacketed

4. Jacket: PVC, Color : Blue or as request

Electrical & Physical Characteristics:

Operational Temperature	-20°C~+70°C
Nominal Velocity of Propagation (NVP)	65%
Characteristic Impedance(Ohm)	100±15
Operating Voltage, maximum	80 V

Fluke tested

Frequency (MHz)	Attenuation (dB)	NEXT (dB)	PSNEXT (dB)	ACRF (dB)	PSACRF (dB)	Return loss (dB)	Delay (ns)
1.00	2.2	60.0	57.0	57.4	54.4	17.0	580
4.00	4.5	53.5	50.5	45.4	42.4	17.0	562
8.00	6.3	48.6	45.6	39.3	36.3	17.0	557
10.00	7.1	47.0	44.0	37.4	34.4	17.0	555
16.00	9.1	43.6	40.6	33.3	30.3	17.0	553
20.00	10.2	42.0	39.0	31.4	28.4	17.0	552
25.00	11.4	40.3	37.3	29.4	26.4	16.0	551
31.25	12.9	38.7	35.7	27.5	24.5	15.1	550
62.50	18.6	33.6	30.6	21.5	18.5	12.1	549
100.00	24.0	30.1	27.1	17.4	14.4	10.0	548

RG6 18AWG

70°C, CMG RATED

STRUCTURE:

1. **Conductors:** 18 AWG Copper Clad Steel
2. **Insulation:** Foam PE
3. **Assembly:** AL Foil Shielded; 60% AL-MG Braiding; Jacketed
4. **Jacket:** PVC, Color : Black or as request



- UL444
- Directive (EU) RoHS

Electrical & Physical Characteristics:

Operational Temperature	-20°C~+70°C
Conductor DCR 20°C	≤100Ω/KM
Characteristic Impedance	75±3Ω
Capacitance	53±3 pF/m
Return Loss	5—3000MHz ≥20dB

22 AWG 4C QUAD CABLE

70°C, CMG RATED; 4 UNSHIELDED CORES



- UL 444 CMG
- CSA FT4
- Directive (EU) RoHS

STRUCTURE:

1. **Conductors :** 22 AWG Solid Bare Copper
2. **Insulation :** PVC Red, White, Black, Green
3. **Assembly :** 4 Core Twisted, Cabled; Unshielded; & Jacketed
4. **Jacket:** PVC, Color : White or as request

Electrical & Physical Characteristics:

Operational Temperature	-20°C~+70°C
Conductor DCR 20°C	≤59.1Ω/KM
Operating Voltage, maximum	300 V